



PRODUCT LIMITED WARRANTY AND REPAIR POLICY

Eberle Design Inc. warrants all equipment to be free from defects in material or workmanship for a period of two (2) years from date of manufacture. Load Switches and Flashers receive a one (1) year warranty period. Eberle Design Inc. will perform any repair due to defects in material or workmanship during the warranty period. Repair service after the warranty period has expired will be available at the following rates:

1. Signal Monitor Repair / Recertification

For more information on the Recertification program visit <https://www.EDIttraffic.com/recertification>

- a. Contact your local EDI distributor for a return authorization number.
- b. To locate your local EDI distributor, contact the EDI Sales Department and we will refer you to one in your area: Email: Services@EDIttraffic.com Telephone: (480) 968-6407

2. Cabinet Component Repair

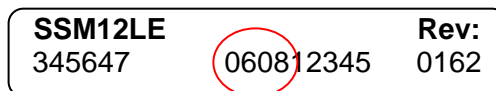
Cabinet components may be sent directly to EDI for Repair:

- a. **Load Switches and Flashers** at the flat rate of \$14.00 USD.
- b. **Loop Detectors** at the flat rate of \$25.00 USD.
- c. **Auxiliary Devices** (BIUs, SIUs, Power Supplies, HDSP/FU, etc) at the flat rate of \$35.00 USD.

These rates are subject to change without notice. Repaired products are warranted for a period of 90 days. Recertified signal monitors are warranted for a period of 2 years. Return shipping is included in the flat rate.

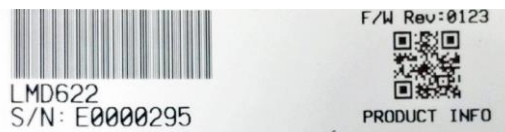
Eberle Design Inc. reserves the right to supply new or replacement products at its discretion and has sole right to determine whether or not any item is covered under our warranty policy. This warranty does not cover damage due to lightning, physical abuse, unauthorized attempts at repair, modifications, or mis-application of the unit. Lightning or high voltage damaged units, if repairable, will be returned with no warranty of any kind.

For product shipped prior to May 2018, the warranty start date can be determined from the nine-digit serial number. This nine-digit number is composed with the first two digits being the year of manufacture, the next two digits are the month of manufacture, and the last five digits are an incrementing number for the month. For example, in the serial number example of 060812345, the digits 06 would represent the year 2006 and the digits 08 would represent the month of August.



For product shipped May 2018 or later, the warranty start date can be determined by scanning the QR code with a "Smart Phone" or other scanning device. If no scanning device is available, click on the following link.

[Serial Number Lookup](#)



Send the equipment to:
Eberle Design Inc.
Attention: Repair
3510 E Atlanta Avenue
Phoenix, AZ 85040

To avoid potential delays on the repair service, please include all contact information and any relevant test reports or failure descriptions available.