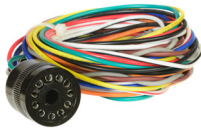


LMH4-11
11 Pin Harness
Loop Detectors



Connector: 11 Pin Plug Type
Length: 4 feet (1.22 meters)
Wire size: #20 AWG Stranded
Wire type: U.L. Style 1015
Wire Insulation: PVC
Wire Ratings: 105°C; 600 V RMS
Jacket: None
Termination: None
Twisted Pairs: Pins 7 (Gray) and 8 (Brown)

Pin	Color	Function
1	Black	DC / AC (+) / Line
2	White	DC Ground / AC (-) / Neutral
3	Orange	Output Relay "B", Normally Open (Closes for DETECT)
4	Green	No Connection
5	Yellow	Output Relay "A", Common
6	Blue	Output Relay "A", Normally Open (Closes for DETECT)
7	Gray	Loop Input
8	Brown	Loop Input
9	Red	Output Relay "B", Common
10	White / Black	Output Relay "A", Normally Closed (Opens for DETECT)
11	White / Red	Output Relay "B", Normally Closed (Opens for DETECT)

LMH8
10 Pin Harness
Loop Detectors



Connector: 10 Pin MS3106A-18-1S Type
Length: 8 feet (2.44 meters)
Wire Type: U.L. Style 1015
Wire Size: #24 AWG Stranded
Wire Insulation: PVC
Wire Ratings: 105°C; 600 V RMS
Twisted Pairs: Pins D & E

Pin	Color	Function
A	White	Neutral (AC-)
B	Yellow	Ch1 Output Common (emitter)
C	Black	Power (AC+)
D	Grey	Loop Input
E	Brown	Loop Input
F	Blue	Ch 1 Output N.O. (collector)
G	Red	Ch 1 Output N.C
H	Green	Earth Ground
I	Orange	Reserved
J	White/Red	Ch 1 Timer Control

LMH8R
10 Pin Harness
Loop Detectors and AVI Receivers



Connector: MS-3106A-18-1S (10 pin)
Length: 8 feet
Wire size: #22 AWG
Wire type: MIL-W-16878/17
Termination: None
Jacket: Nylon Mesh (Orange)
Twisted Wires: Pins D & E (Red & Orange) Loop Wires

Pin	Wire Color
A	White
B	Brown
C	Black
D	Red
E	Orange
F	Yellow
G	Blue
H	Green
I	Violet
J	Gray

LMH804-8
19 Pin Harness
Loop Detectors



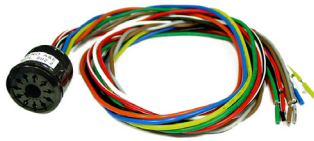
Connector: MS-3106A-22-14S (19 pin)
Length: 804-8 (8ft)
Wire size: #22 AWG
Wire type: MIL-W-16878/1 Type B/N
Jacket: PVC Black
Termination: None

Twisted pairs:
Pins D&E
Pins F&G
Pins J&K
Pins L&M

Pin	Wire Color
A	White
B	Gray/Black
C	Black
D	Brown
E	White/Brown
F	Red
G	White/Red
H	Green
J	Orange
K	White/Orange

Pin	Wire Color
L	Yellow
M	White/Yellow
N	White/Blue
P	Blue
R	Violet
S	White/Violet
T	Gray
U	White/Gray
V	White/Black

LMH802-2
11 Pin Harness
Loop Detectors



Connector: Similar to Amphenol 78-S11 (11 pin)
Length: 2 feet
Wire type: PVC 105°C / 600V
Wire size: #20 AWG
Termination: None

Pin	Wire Color
1	Black
2	White
3	Orange
4	Green
5	Yellow
6	Blue

Pin	Wire Color
7	Gray
8	Brown
9	Red
10	Black/White
11	Red/White

LMH802-4
11 Pin Harness
Loop Detectors



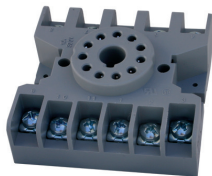
Connector: 78-S11 (11 pin)
Length: 4 feet
Wire type: PVC 105°C / 600V
Wire size: #20 AWG
Termination: None
Jacket: Nylon mesh (30 in. long)

Twisted pairs:
Pins 7 & 8
Pins 10 & 11

Pin	Wire Color
1	Black
2	White
3	Orange
4	Green
5	Yellow
6	Blue

Pin	Wire Color
7	Gray
8	Brown
9	Red
10	Black/White
11	Red/White

Model SKT-11
Socket Base
Loop Detectors



Female, relay type socket base (11 pin)
Screw mount (not DIN rail mountable)
Termination: Screw terminals

Specifications subject to local environmental conditions, and may be subject to change. All Eberle Design LLC. products are Designed, Manufactured and Tested in the United States of America in facilities that are certified to ISO quality standards. "Eberle Design Inc." and Eberle Design LLC. logo are trademarks of Eberle Design Inc. © 2024, Eberle Design LLC. Document: EDI_DATA_Wiring-Harness_RevA