



# Support Tee

FOR PREFORMED LOOPS

Designed to support a preformed loop above the rebar when pouring concrete.

## FEATURES

- Ensures loops are a minimum of 2" above the rebar
- Used with 3/8" rebar
- Can be secured with simple cable ties
- Small lightweight design
- Quick and easy installation

## INSTALLATION

- Hammer 3/8" rebar into ground leaving at least 2" of rebar exposed
- Place every 1' to 2' around the perimeter of the loop
- Insert Support Tee over the rebar
- Position the loop on the tee
- Use a wire/cable tie to secure it into place



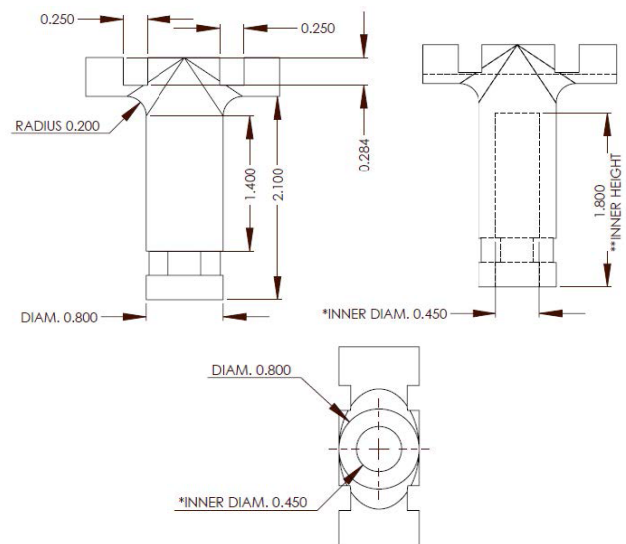
## General Characteristics

Material: VALOX 553, 30% Glass-filled PBT by GE or equivalent. Color: Black

## Note

The rebar should be cut long enough to be driven firmly into the ground to securely hold the tee at the correct height above the concrete reinforcing steel. The spacing of the tee/rebar supports should be no more than 2 feet apart to properly support the cable.

## Dimensions



Specifications subject to local environmental conditions, and may be subject to change. All Eberle Design LLC. products are Designed, Manufactured and Tested in the United States of America in facilities that are certified to ISO quality standards. "Eberle Design Inc." and Eberle Design LLC. logo are trademarks of Eberle Design Inc. © 2024, Eberle Design LLC. Document: EDI\_DATA\_Support-Tee\_RevA